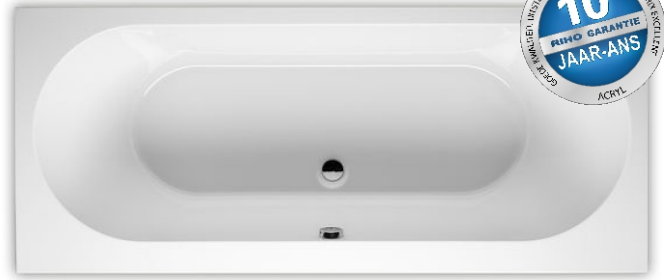


CAROLINA

This high-gloss white acrylic bath has a timeless design and fits in both a classic and a modern bathroom. Carolina is a few centimeters deeper than other Riho built-in baths. The rounded back shape on both sides provides excellent support and a pleasant feel. The drain is located on the long side, so you can take a seat on both sides of the bathtub. In the larger sizes there is even enough space for two people.

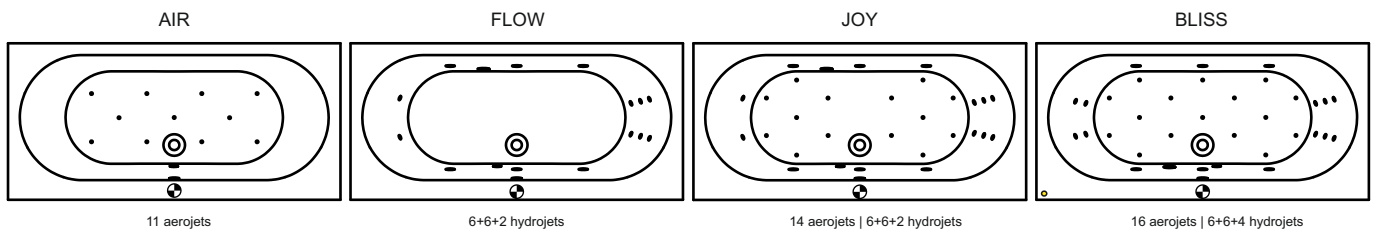


Riho acrylic bathtubs are made of high-quality acrylic, fully reinforced and all through white in colour. The acrylic baths are non-aging and UV resistant. The material is completely pore-free and smooth. Lime will adhere poorly so no bacteria remain. Therefore, the baths are easy to clean. The surface is pleasantly warm. Standard the bathtub does not include a legset and overflow/drain.

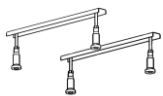
Article nr.	L x W x H (cm)	Volume* (ltr)	Weight (kg)	Water height (cm)	Option Rihopool**
B055001005	170 x 80 x 53	190	26	42	Air / Joy / Flow / Bliss
B056001005	180 x 80 x 53	210	28	42	Air / Joy / Flow / Bliss
B057001005	190 x 80 x 53	235	29	42	Air / Joy / Flow / Bliss

* The contents of the baths are measured including the (average) volume of one person.

** Rihopool whirlpool systems already include a legset.



Additional to purchase



Legset 01U
207093

Whirlpools already include a legset!



Mc Alpine
208867



Riho black
208711



Viega Multiplex
208873



Viega Multiplex Trio
208875

Optional to purchase



Headrest 14
207038



Headrest 14
207037



Headrest 17
207041



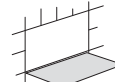
Headrest 19
207043



Headrest 19
207044



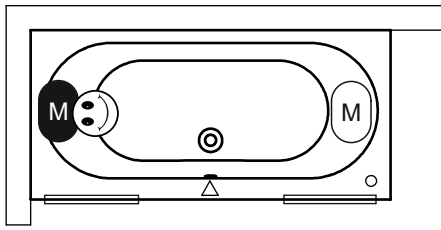
See overview



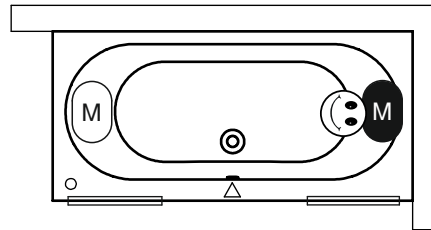
Inspection hatch
207019

Data is subject to changes and/or errors

Right type



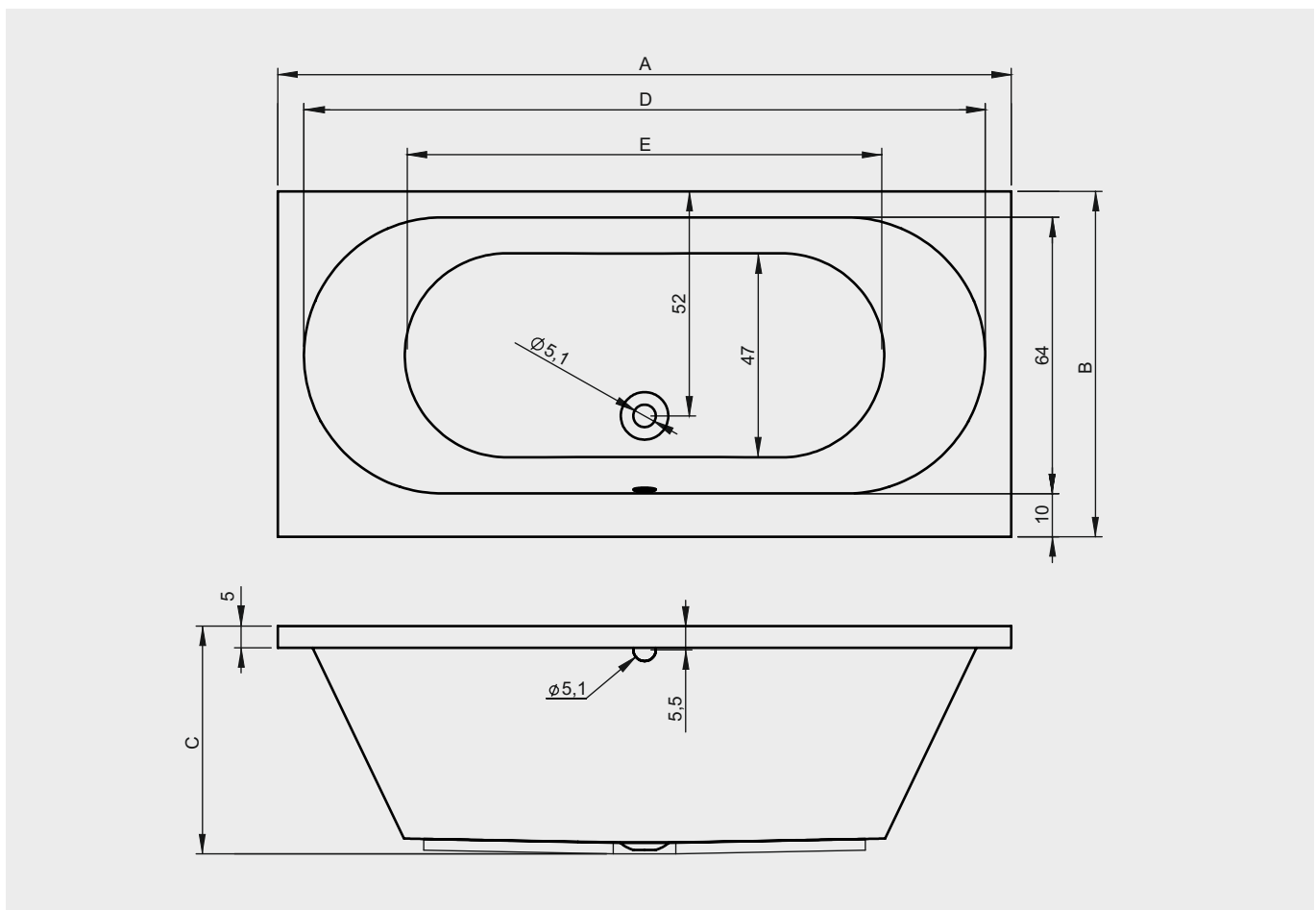
Left type



- Motor in Air or Flow (Hydro or Aero)
Hydro motor in Joy and Bliss (Hydro + Aero)
- Aero Motor in Joy and Bliss (Hydro + Aero)
- Control panel
- Cleanpool inlet
- Service hatch

BATHSCREENS	Scandic X107	Scandic X108	Scandic X109	Scandic X109V	Scandic X409	Scandic X500	Novik Z107	Novik Z500	Grid GB501	Lucid GD501
-------------	--------------	--------------	--------------	---------------	--------------	--------------	------------	------------	------------	-------------

	A	B	C	D	E
B055001005	170	80	53	158	110
B056001005	180	80	53	168	120
B057001005	190	80	53	178	132



Data is subject to changes and/or errors